



Lot 279 | Lot Size 263m<sup>2</sup> | Frontage 10.5m



## CLAYFIELD

# \$386,200\*

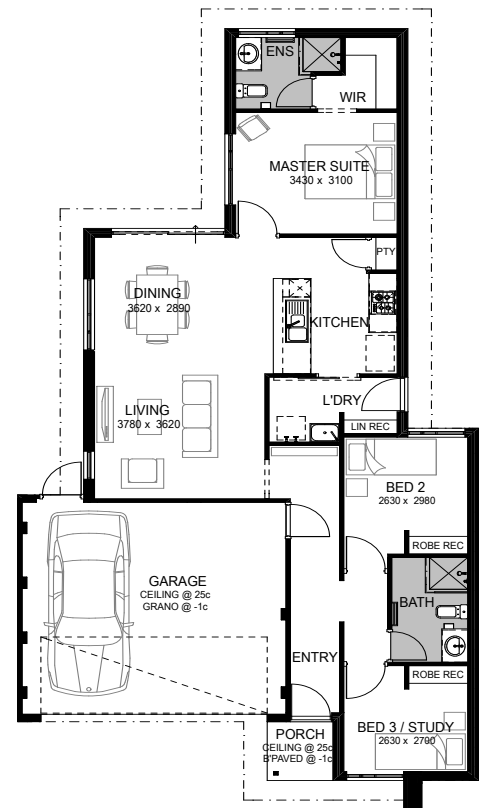
Set on 263m<sup>2</sup> this home boasts 3 bedrooms, and 2 bathrooms. The large master suite at the rear of the home gives you the luxury of a relaxing and private retreat and features:

- Double brick construction
- Fixed price site works
- Guaranteed 24 week build time
- Stone benchtops
- High ceilings
- Gourmet 900mm stainless steel appliances

For more information please contact  
**Shane Cownie**  
**0408 118 161** or  
**shanec@wahousingcentre.com.au**



[harrisdalegreen.com.au](http://harrisdalegreen.com.au)



\*The builder is not the owner of the land, and has permission from Cedar Woods Properties Ltd to advertise the land for the price specified. Land prices and availability are subject to change without notice and do not include stamp duty, settlement fees, or any other disbursements required for settlement. Terms and conditions apply. All area and dimensions are subject to survey. Site costs quoted are allowances only and are subject to change on the basis of survey and engineer reports. The images displayed are for illustrative purposes only and may include some features, fixtures and landscaping not supplied as part of this package. To obtain details of the design specification, package inclusions, or alternate designs to suit this block please contact the builder. Design and specification are subject to compliance with developer's covenants. Price was correct at the time of printing 11/09/2019 and the land was still available for sale. \*From price, includes \$10,000 First Home Owners grant which is available to eligible purchasers only.