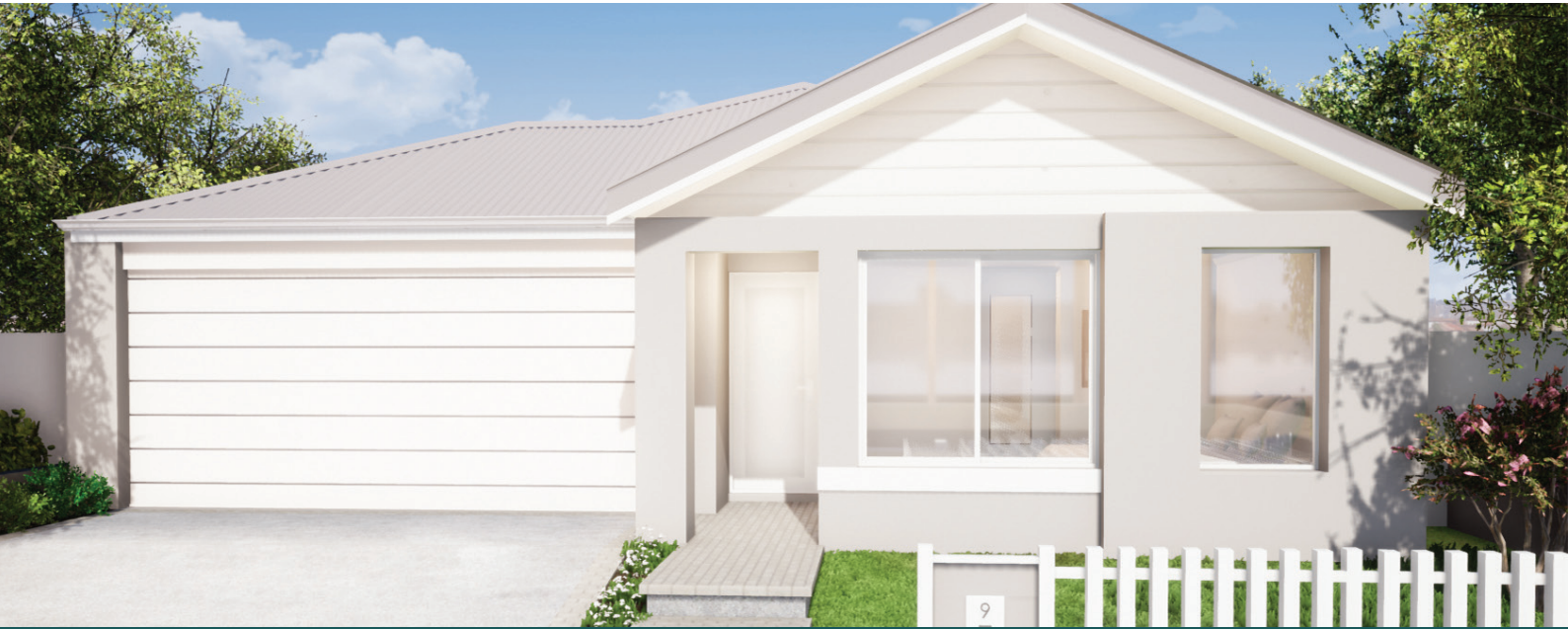


# House & Land Package



Lot 151 | Lot Size 400m<sup>2</sup> | Frontage CNR



## THE AFFINITY

# \$496,800\*

Set on 400m<sup>2</sup> this home boasts 4 bedrooms and is a great home to entertain in with all the living to the rear with a large kitchen at one end and features:

- 5.1kw solar package
- Fully ducted reverse cycle air conditioning
- LED down light package
- Caesarstone kitchen benchtops
- Carpets and floor tiling and window treatments
- Home security package

For more information please contact

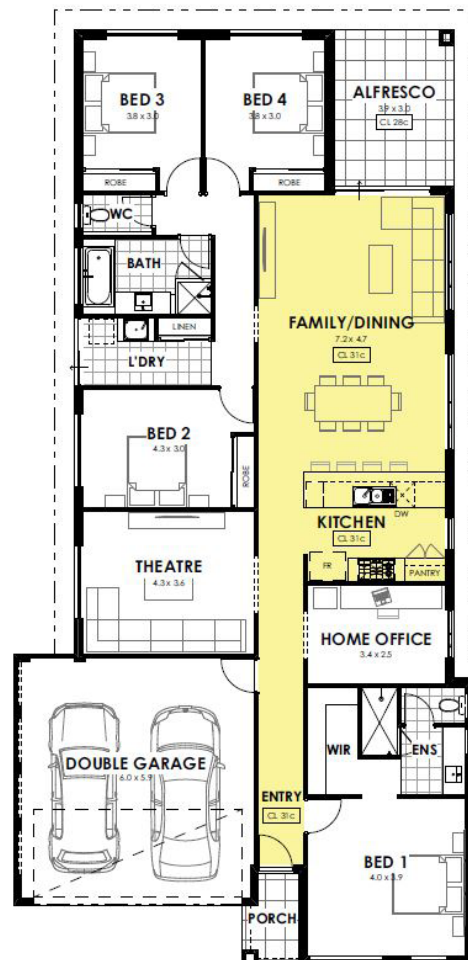
**Ian Hatfield**

**0410 341 445 or**

**ianh@shelford.com.au**



[harrisdalegreen.com.au](http://harrisdalegreen.com.au)



\*The builder is not the owner of the land, and has permission from Cedar Woods Properties Ltd to advertise the land for the price specified. Land prices and availability are subject to change without notice and do not include stamp duty, settlement fees, or any other disbursements required for settlement. Terms and conditions apply. All area and dimensions are subject to survey. Site costs quoted are allowances only and are subject to change on the basis of survey and engineer reports. The images displayed are for illustrative purposes only and may include some features, fixtures and landscaping not supplied as part of this package. To obtain details of the design specification, package inclusions, or alternate designs to suit this block please contact the builder. Design and specification are subject to compliance with developer's covenants. Price was correct at the time of printing (27/09/2019) and the land was still available for sale. \*From price, includes \$10,000 First Home Owners grant which is available to eligible purchasers only.

