

House & Land Package



Lot 204 | Lot Size 363m² | Frontage 14.7m



THE SWANBOURNE

\$495,451*

Set on 363m² this home boasts 4 bedrooms and a large 14m frontage custom designed with bonus \$30k gourmet kitchen. It is complete turnkey luxury and features:

- 31c high ceilings
- Fully ducted reverse cycle air conditioning
- LED lighting throughout internally
- Porcelain glazed 450mm x 450mm floor tiles
- Luxurious loop pile carpet
- \$30k gourmet kitchen with stone benchtops

For more information please contact

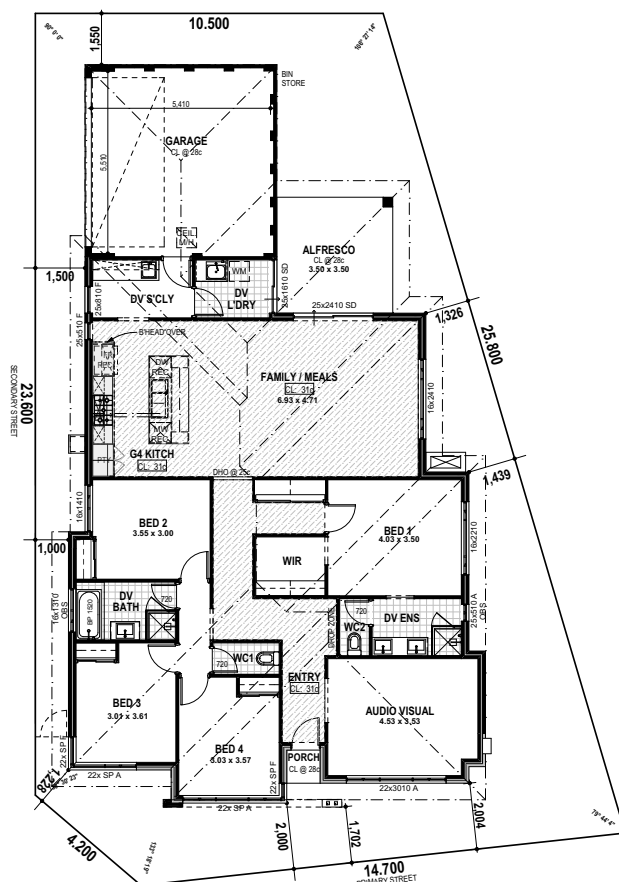
Will Masci

08 9440 1800 or

will.masci@blueprinthomes.com.au



harrisdalegreen.com.au



*The builder is not the owner of the land, and has permission from Cedar Woods Properties Ltd to advertise the land for the price specified. Land prices and availability are subject to change without notice and do not include stamp duty, settlement fees, or any other disbursements required for settlement. Terms and conditions apply. All area and dimensions are subject to survey. Site costs quoted are allowances only and are subject to change on the basis of survey and engineer reports. The images displayed are for illustrative purposes only and may include some features, fixtures and landscaping not supplied as part of this package. To obtain details of the design specification, package inclusions, or alternate designs to suit this block please contact the builder. Design and specification are subject to compliance with developer's covenants. Price was correct at the time of printing 07/02/2020 and the land was still available for sale.